



Features

- Automated extraction of metadata like author, size, document type and location.
- Metadata is stored in RDF, an open W3C standard (no vendor lock-in, future proof).
- Available metadata facets: title, author, size, date, significant terms, type, location, language (experimental).
- Scheduled scanning of information sources.
- Support for MS Word, MS PowerPoint, MS Excel, MS Works, PDF, OpenOffice, StarOffice, TXT, XML, HTML, WordPerfect, RTF.
- Support for file systems, network drives and websites.

Aduna Metadata Server

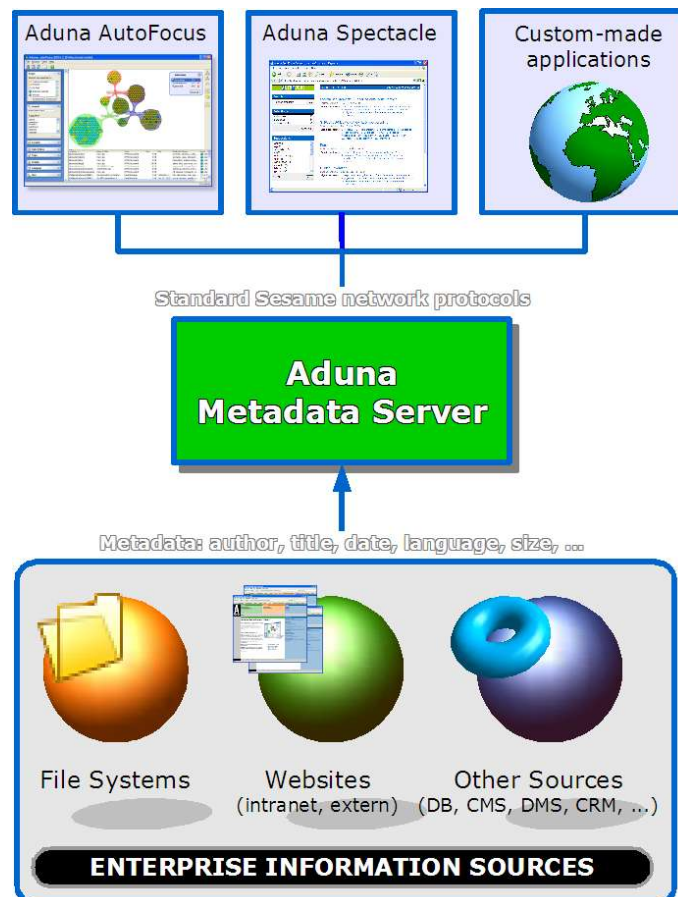
Metadata = valuable!

Metadata is information about information, for example the author of a document or its publication date. Metadata is helpful when you want to find or explore information. It helps you to see what information is there, to decide whether it is of value to you and where to go next. Metadata saves you time in finding the right information.

Automated metadata extraction

The Aduna Metadata Server automatically extracts metadata from information sources, like a file server, an intranet or public web sites.

The stored metadata is available for tools such as Aduna AutoFocus and Aduna Spectacle. These tools enable the user to find and explore information by using the extracted metadata.



Download

Free download of Aduna Metadata Server at <http://aduna.biz>



System requirements

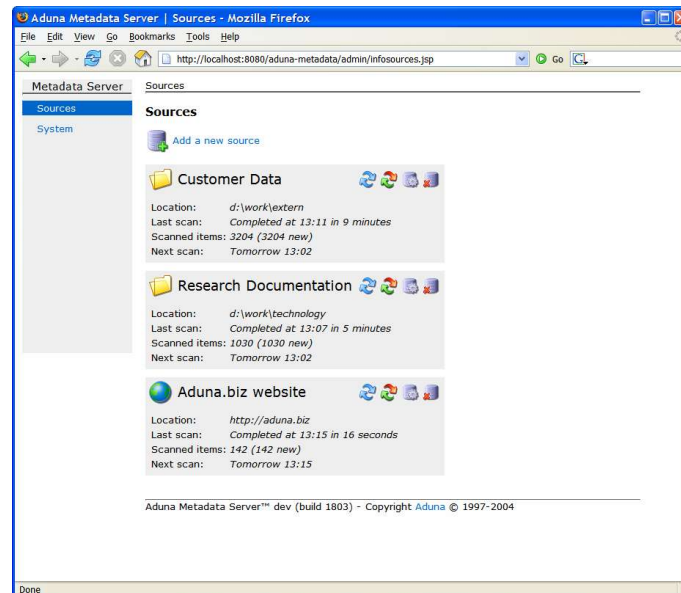
- Aduna Metadata Server runs as a standard web application on a Java application server that supports the Servlet 2.3 API and JSP 1.1. Furthermore, the Metadata Server requires Java 1.4.2 or higher.
- CPU: the absolute minimum is a Pentium II at 400 MHz, a Pentium III at 1 GHz or better is recommended.
- Main memory: minimally 128 MB, 256 MB is recommended.
- Disk space requirements: 100 MB + 2 MB per 1000 scanned items.

Contact

Contact info@aduna.biz for more information about Aduna Metadata Server.

Up in short time

The Aduna Metadata Server is a powerful and scalable store for metadata. It works out-of-the-box. Just install the server, use the administration pages to define the information sources to be scanned and schedule the scanning process.



Screen shot of the administration page of the Aduna Metadata Server, where the administrator defines information sources to be scanned and their scanning schedules.

Using Aduna Metadata Server

With Aduna AutoFocus and Aduna Spectacle you can access the Metadata Server. The different metadata facets are offered to the user by these tools as a selection mechanism for further refinement or exploration. They enable cross-facet questions like: 'Give me all PDF's (value of *type* facet) that I (value of *people* facet) made yesterday (value of *time* facet) with the word 'project X' in it (value of *keyword* facet).

Open standard for metadata

The Metadata Server is based on Sesame, an open source RDF-based storage framework. Read more about Sesame at <http://openrdf.org>. RDF is an open W3C standard for description of metadata.

You can write your own applications that make use of the Aduna Metadata Server. The server is accessible with standard (Sesame) protocols.